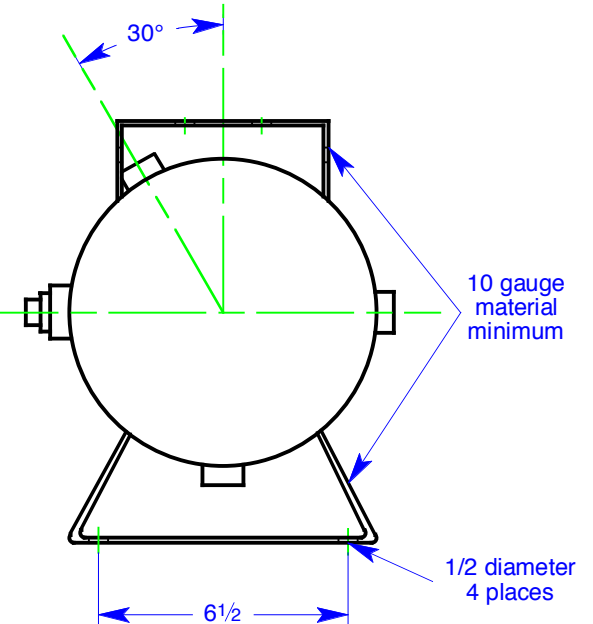


**Notes:**

1. Tank should be primed and painted glossy black
2. CRN number is required for all provinces - quote as separate line item
3. Working pressure 600 psi minimum - rate for as high a pressure as materials allow
4. Carbon steel material
5. Quote quantities of 20 and 50



UNLESS OTHERWISE SPECIFIED DIMENSIONS ARE IN INCHES TOLERANCES ON: 2 PL DECIMALS +/- 0.01 3 PL DECIMALS +/- 0.003 ANGLES +/- 0.5° FRACTIONS +/- 1/16	SIGNATURES		DATE	<b>MPS</b> Midwest Pressure Systems, Inc. MIDWEST PRESSURE SYSTEMS 1035 Entry Drive, Bensenville, IL 60106	
	DRAWN RAV		12/14/04		
	CHECKED				
	ENGRG				
MATERIAL:	ISSUED RAV		12/14/04	<b>625 psi ASME Receiver Tank</b>	
		A	DWG NO	P0252	REV
		SCALE	SHEET		