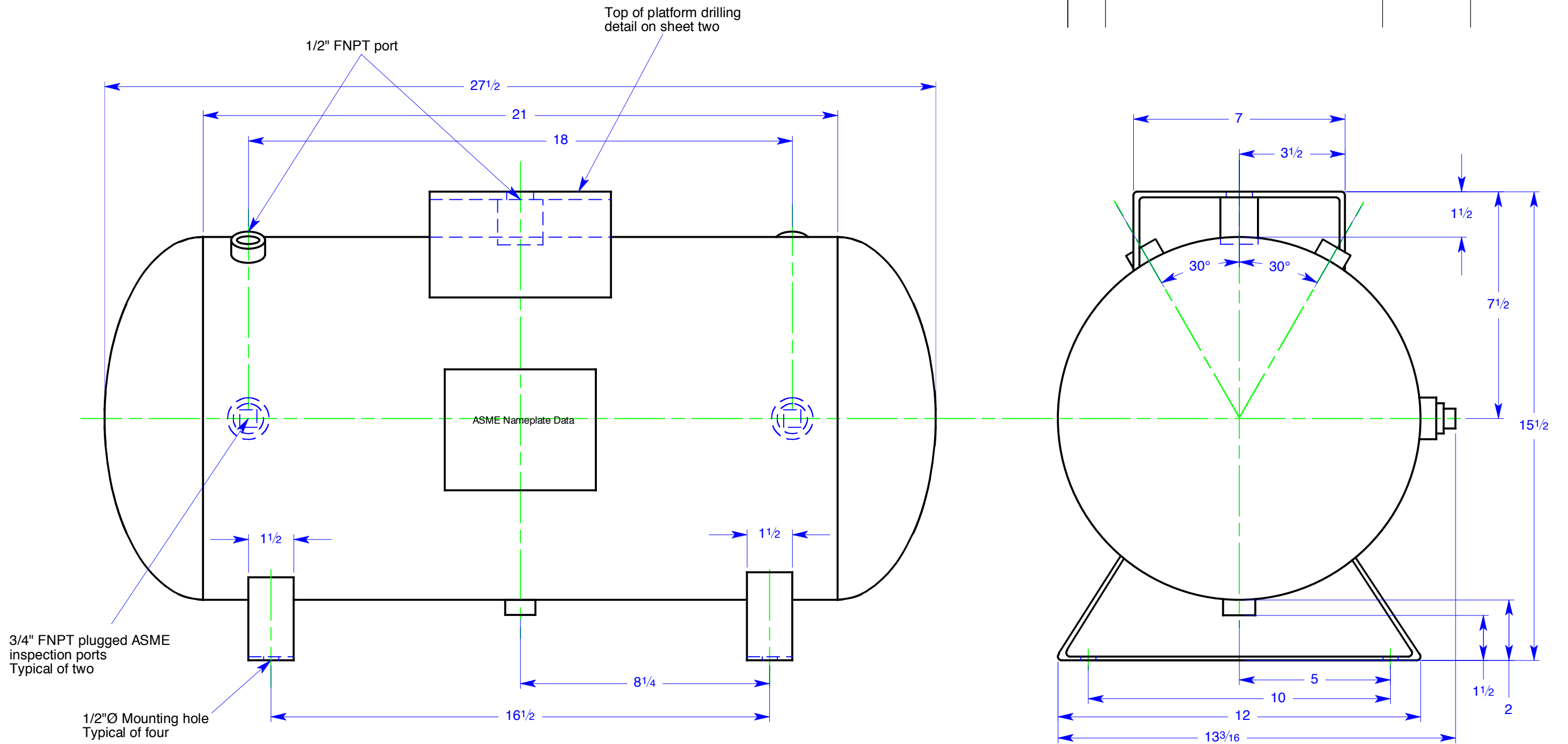


| REVISIONS | | | |
|-----------|--------------------------------------|---------|----------|
| REV | DESCRIPTION | DATE | APPROVED |
| 1 | Increased pressure rating to 235 psi | 4/20/04 | RAV |



- NOTES:
 1. Tank primed and painted glossy black
 2. Maximum allowable working pressure of 235 psi

| | | | | |
|--|------------|-----|--------|---|
| UNLESS OTHERWISE SPECIFIED DIMENSIONS ARE IN INCHES TOLERANCES ON: 2 PL DECIMALS +/- 0.01 3 PL DECIMALS +/- 0.003 ANGLES +/- 0.5° FRACTIONS +/- 1/16 | SIGNATURES | | DATE | MPS MIDWEST PRESSURE SYSTEMS Midwest Pressure Systems, Inc. 1035 Entry Drive, Bensenville, IL 60106 12 Gallon, 235 psi Receiver Tank |
| | DRAWN | RAV | 9/7/00 | |
| | CHECKED | | | |
| | ENGRG | | | |
| MATERIAL: | ISSUED | RAV | 9/7/00 | |
| | | | | DWG NO P0174 REV 1 SCALE SHEET 1 of 2 |

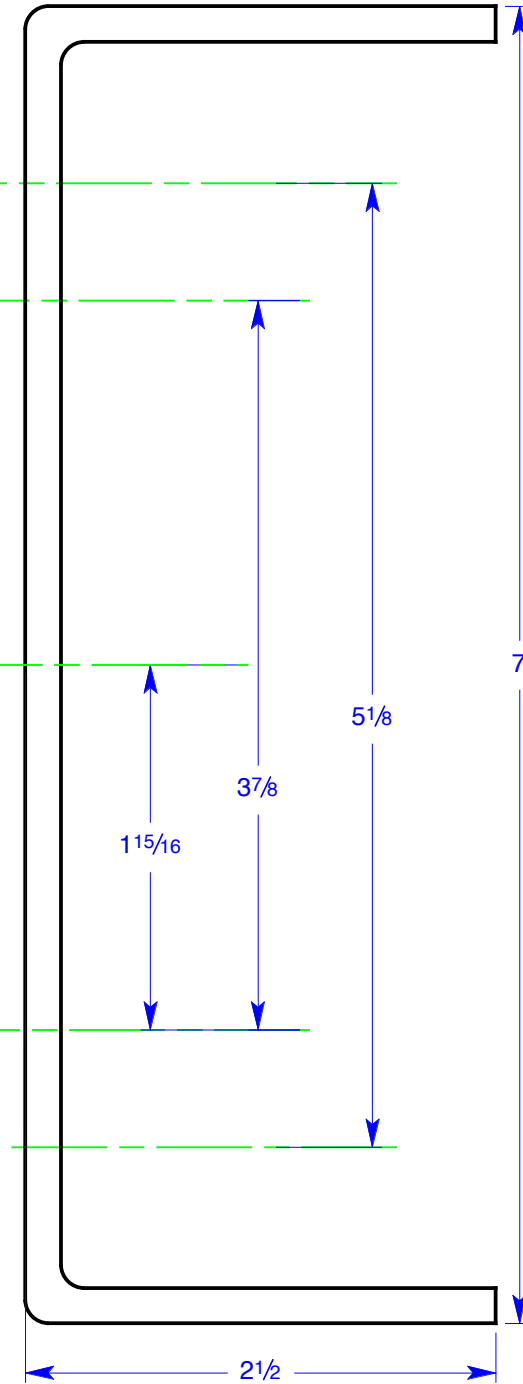
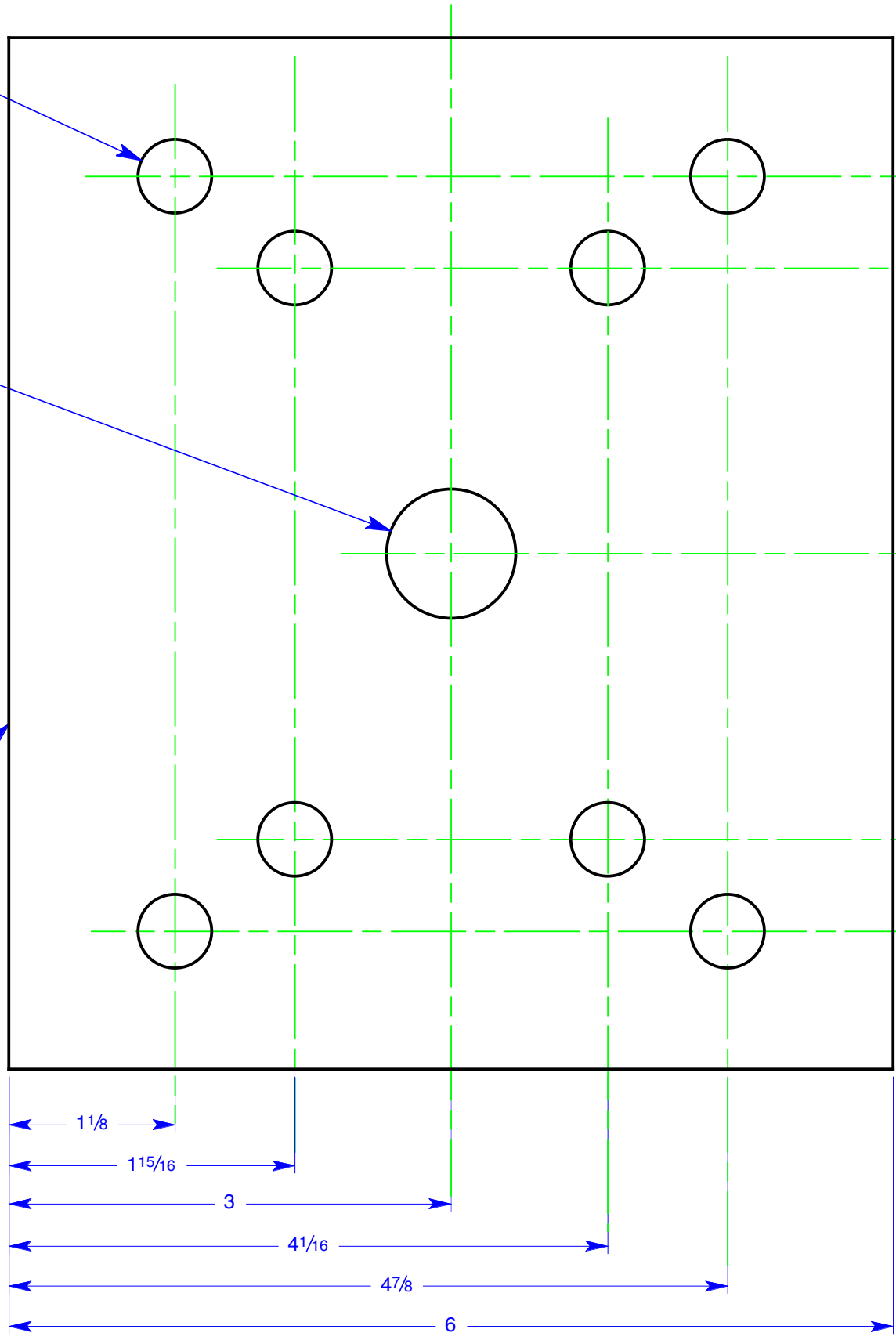
REVISIONS

| REV | DESCRIPTION | DATE | APPROVED |
|-----|--------------------------------------|---------|----------|
| 1 | Increased pressure rating to 235 psi | 4/20/04 | RAV |

1/2" Ø hole
typical of eight

7/8" Ø hole

Note:
Prior to priming and painting, the top of the platform is to be sanded flat and smooth to accommodate an o-ring seal around the perimeter of the 7/8" Ø hole.



| | | | | |
|--|------------|-----|--------|---|
| UNLESS OTHERWISE SPECIFIED DIMENSIONS ARE IN INCHES TOLERANCES ON: 2 PL DECIMALS +/- 0.01 3 PL DECIMALS +/- 0.003 ANGLES +/- 0.5° FRACTIONS +/- 1/16 | SIGNATURES | | DATE | MPS MIDWEST PRESSURE SYSTEMS 1035 Entry Drive, Bensenville, IL 60106 12 Gallon, 235 psi Receiver Tank |
| | DRAWN | RAV | 9/7/00 | |
| | CHECKED | | | |
| | ENGRG | | | |
| MATERIAL: | ISSUED | RAV | 9/7/00 | |
| | SCALE | | DWG NO | REV |
| | | | P0174 | 1 |
| | | | SHEET | 2 of 2 |