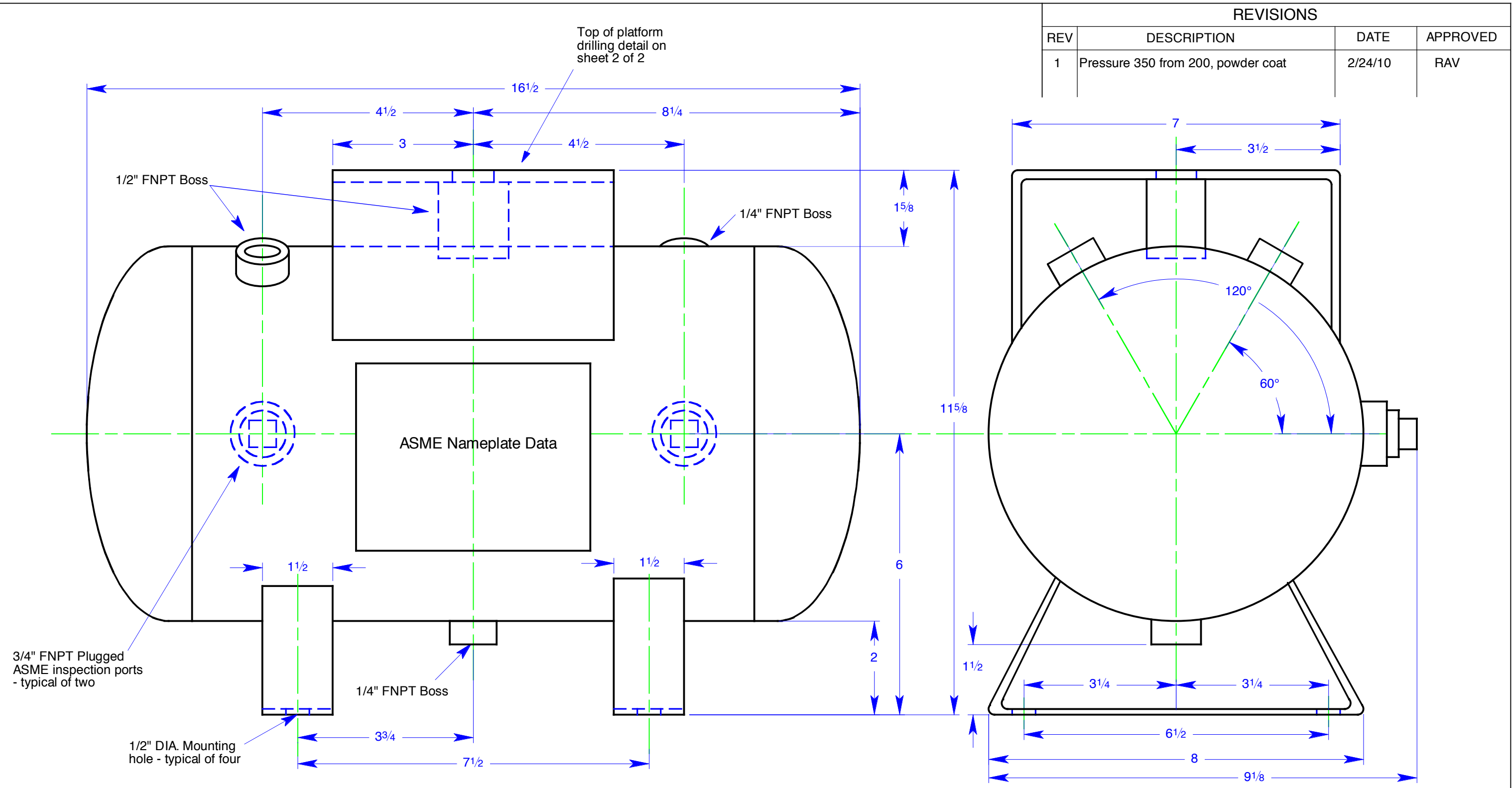


REVISIONS			
REV	DESCRIPTION	DATE	APPROVED
1	Pressure 350 from 200, powder coat	2/24/10	RAV



**NOTES:**

1. Tank is to be primed and painted glossy black powder coat.
2. Maximum Allowable Working Pressure (MAWP) of 350 psig.
3. Both ASME U Stamp and CRN number are required.

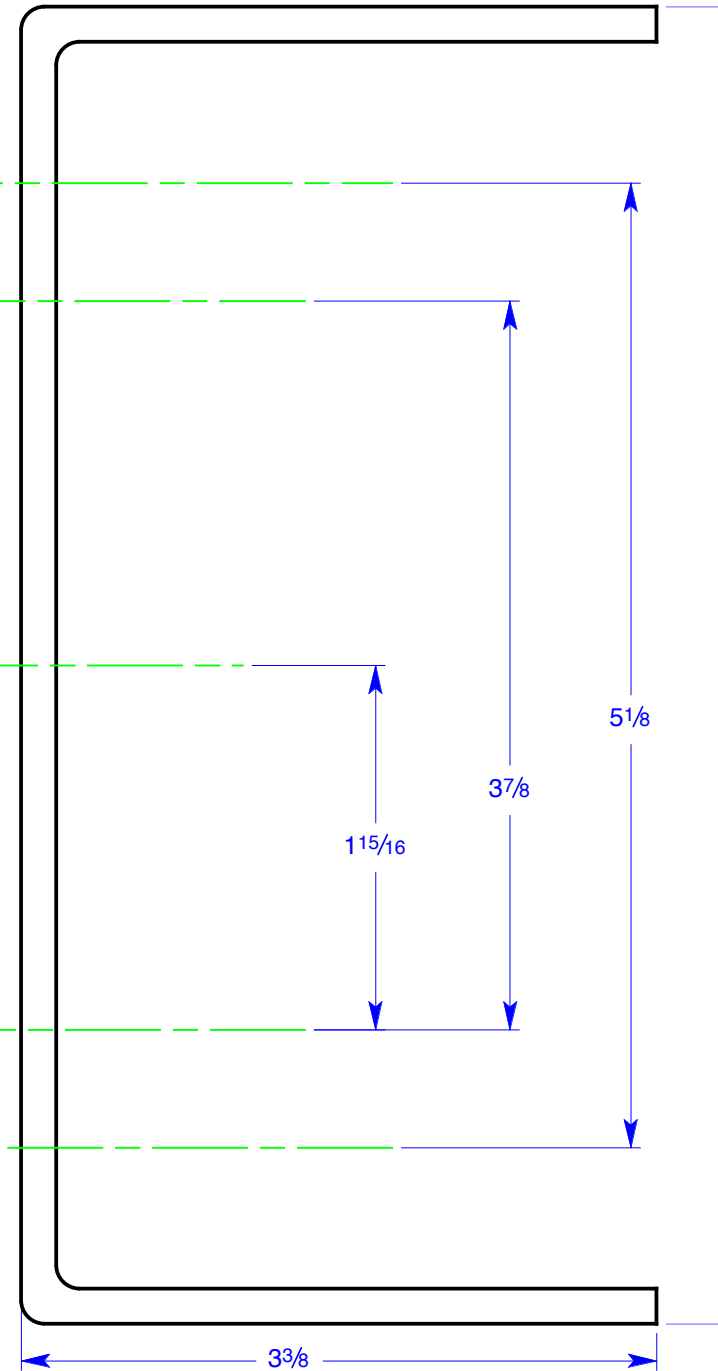
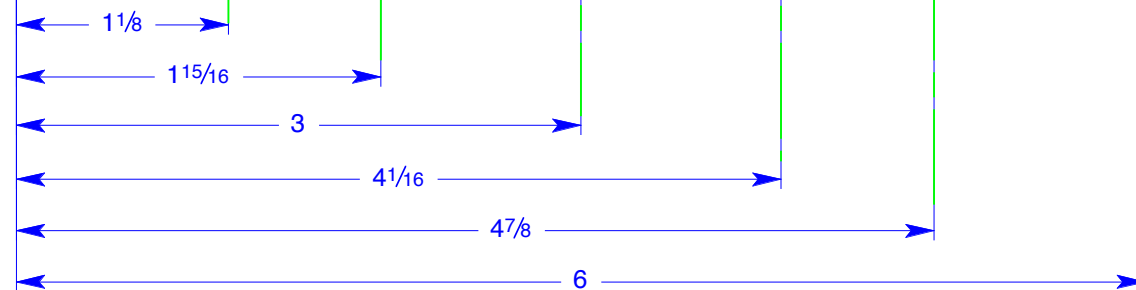
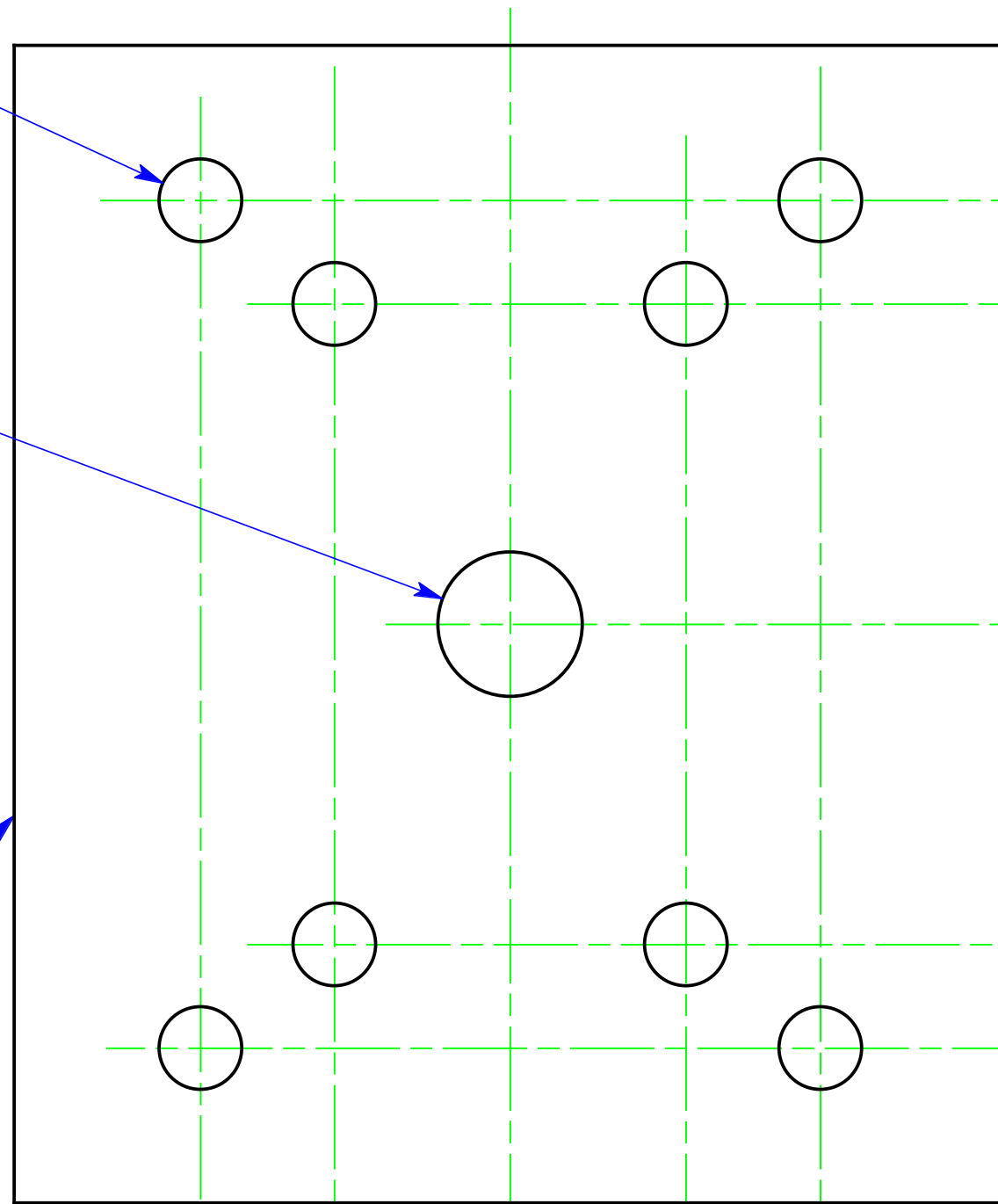
UNLESS OTHERWISE SPECIFIED DIMENSIONS ARE IN INCHES TOLERANCES ON: 2 PL DECIMALS +/- 0.01 3 PL DECIMALS +/- 0.003 ANGLES +/- 0.5° FRACTIONS +/- 1/16	SIGNATURES		DATE	<b>MPS</b> MIDWEST PRESSURE SYSTEMS <b>Midwest Pressure Systems, Inc.</b> 1035 Entry Drive, Bensenville, IL 60106  <b>3.5 Gallon, 350 psi Receiver Tank</b>
	DRAWN	RAV	1/10/95	
	CHECKED	JCG	1/10/95	
	ENGRG			
MATERIAL:	ISSUED	RAV	1/10/95	
				DWG NO <b>P0010</b> REV <b>1</b> SCALE 1:2 SHEET 1 of 2

REVISIONS			
REV	DESCRIPTION	DATE	APPROVED

1/2" Ø hole  
typical of eight

7/8" Ø hole

Note:  
Prior to priming and painting, the top of the platform is to be sanded flat and smooth to accommodate an o-ring seal around the perimeter of the 7/8" Ø hole.



UNLESS OTHERWISE SPECIFIED DIMENSIONS ARE IN INCHES TOLERANCES ON: 2 PL DECIMALS +/- 0.01 3 PL DECIMALS +/- 0.003 ANGLES +/- 0.5° FRACTIONS +/- 1/16	SIGNATURES		DATE	<b>MPS</b> MIDWEST PRESSURE SYSTEMS 1035 Entry Drive, Bensenville, IL 60106  <b>3.5 Gallon, 200 psi Receiver Tank</b>
	DRAWN	RAV	1/10/95	
	CHECKED	JCG	1/10/95	
	ENGRG			
MATERIAL:	ISSUED	RAV	1/10/95	
				DWG NO <b>P0010</b> REV
	SCALE Full			SHEET 2 of 2