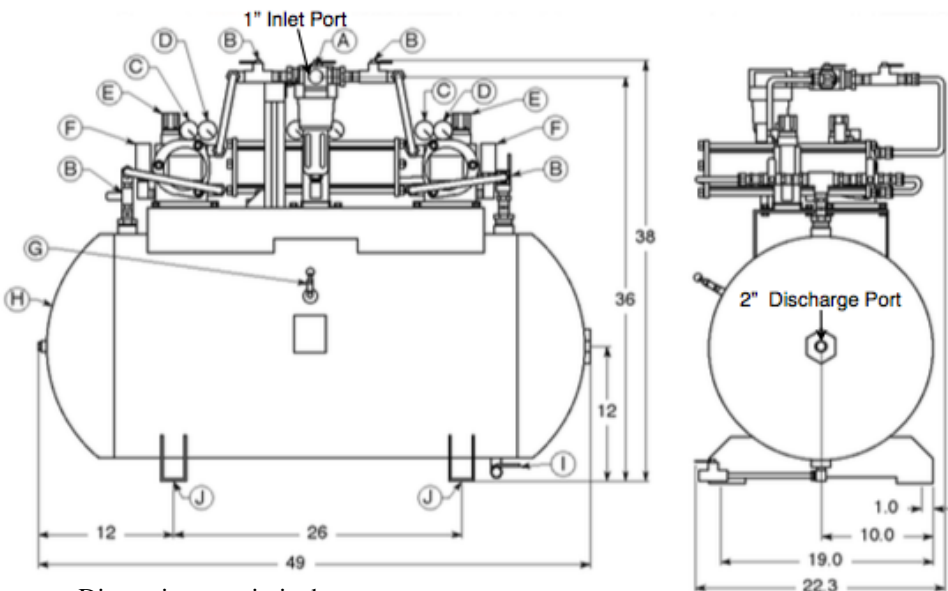


# Model Number R60T

*Bootstrap Compressor 2:1 Ratio Triple Air Pressure Booster System With Horizontal 60 Gallon Receiver Tank*

The Bootstrap Compressor is an air-driven, air pressure booster. It requires no electricity, cooling water, or air-line lubricator and is explosionproof. Shop air is fed to the inlet port through a filter, and is split into two streams inside the booster. One stream flows to the compressor portion of the unit and is boosted to higher pressure. The other stream drives the compressor portion, and is consumed during booster operation. The drive air stream is regulated to maintain the discharge pressure set by the external regulator handle. Drive air consumption is approximately 1/2 to 1 times the amount of pressure-boosted air. For example, if 100 scfm of high pressure air is required, the Bootstrap Compressor will need 150-200 scfm of shop air, and 50-100 scfm of that air will be vented through an exhaust silencer. For a given shop air pressure, Model R60T can deliver high pressure air at any flowrate up to the maximum shown on the flow curves below. The pressure regulator enables the booster to adjust automatically to changes in high pressure air demand or shop air pressure. When there is no demand for high pressure air, the booster stalls at the discharge pressure set by the regulator and consumes no energy. When there is a need for high pressure air, the tank pressure drops which causes the booster to restart automatically.

The R60T can be operated using one, two, or three boosters in unison. During single or dual booster operation the idle booster(s) can be completely isolated and depressurized allowing it to be removed from the system for maintenance.



Dimensions are in inches.

**MPS**  
MIDWEST  
PRESSURE  
SYSTEMS

**Midwest Pressure Systems, Inc.**

850 Transport Drive, Valparaiso, IN 46383  
Phone 219-462-0070 Fax 219-318-2277

[www.midwestpressuresystems.com](http://www.midwestpressuresystems.com)

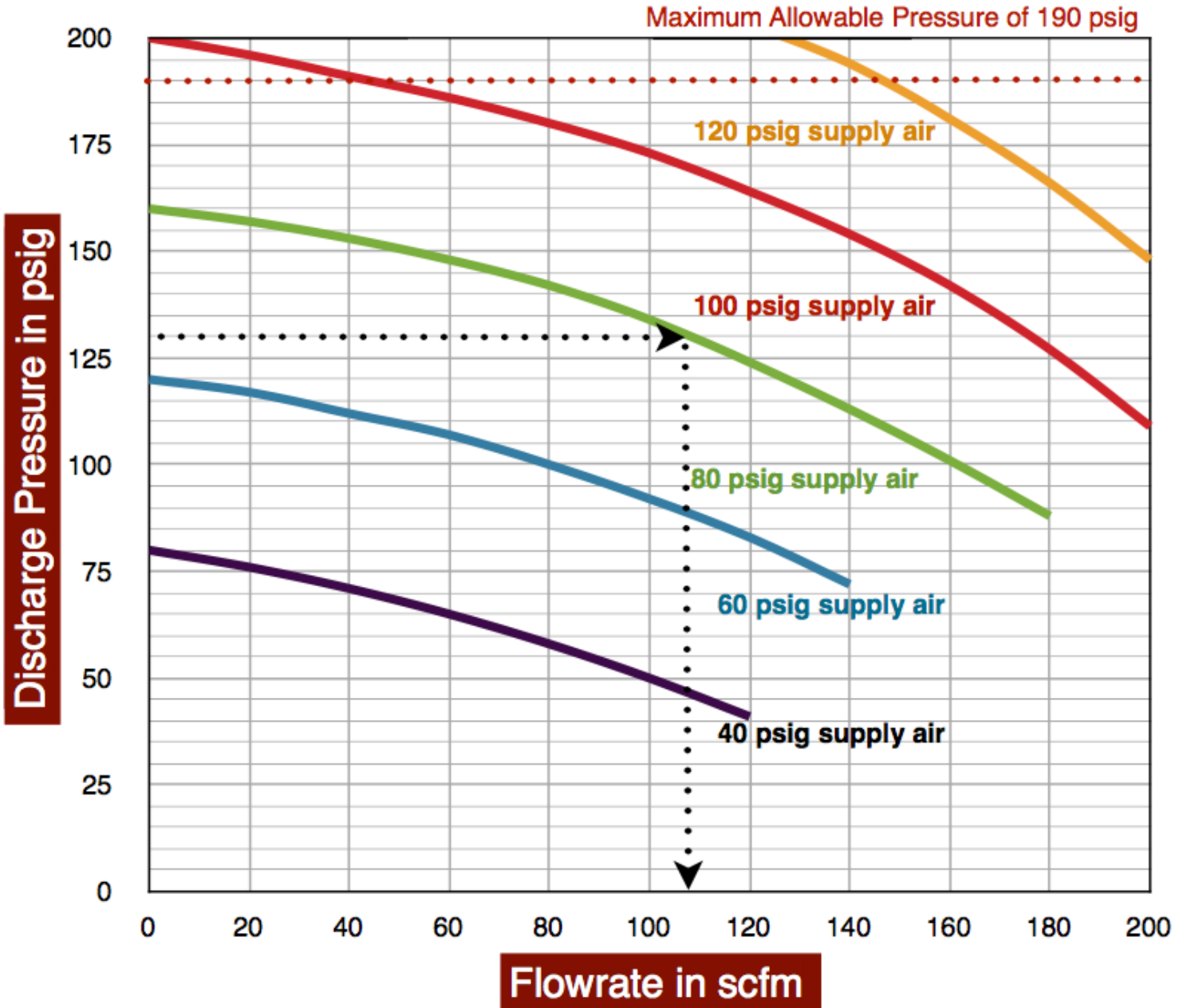
## MODEL R60T FEATURES

- A. 1" FNPT Inlet Filter
- B. 1/2" FNPT Booster Shut-off Valve
- C. Inlet Pressure Gauge
- D. Discharge Pressure Gauge
- E. Built-in Pressure Regulator
- F. Exhaust Silencer
- G. 200 psig ASME relief valve
- H. 60 Gallon, 200 psig ASME Tank
- I. 1/4" FNPT condensate drain valve
- J. Four 1/2" diameter mounting holes

## MODEL R60T SPECIFICATIONS

- Maximum 2 to 1 boost ratio
- Capable of 100% duty cycle
- Inlet pressure range of 15-150 psig
- Discharge pressure range of 15-190 psig
- Temperature range of 40-130°F
- Approximate weight of 265 pounds
- Integral regulator controls discharge pressure and is self-relieving

# Model R60T Flowrate vs Supply and Discharge Pressure



Use the curves above to determine the Model R60T air pressure booster maximum discharge flowrate for a given set of operating conditions. In the example shown above, a maximum discharge pressure of 130 psig is desired and 80 psi supply air is available. Follow the 130 psi line until it intersects with the 80 psi supply air

curve. Draw a vertical line from the intersection down to the bottom line to determine the maximum flowrate of 108 scfm. The booster can operate at any flowrate from zero to the maximum flowrate. It will automatically adjust its operating speed as long as the required flowrate is in this range.



**Midwest Pressure Systems, Inc.**  
 850 Transport Drive, Valparaiso, IN 46383  
 Phone 219-462-0070 Fax 219-318-2277  
[www.midwestpressuresystems.com](http://www.midwestpressuresystems.com)

